



**ASSOCIATED
STUDENTS INC.**
C H A N N E L
I S L A N D S

**NOTICE OF MEETING OF THE BOARD OF DIRECTORS OF
ASSOCIATED STUDENTS OF CSU CHANNEL ISLANDS, INC.**

NOTICE IS HEREBY GIVEN, to the general public and to all of the Board of Directors of Associated Students of CSU Channel Islands, Inc., a California nonprofit public benefit corporation, that:

A meeting of the Board of Directors will be held on Thursday, January 20, 2010 at 8:00 a.m., pursuant to Education Code Section 89921 et seq., at California State University Channel Islands, Student Union Conference Room, located at One University Drive, Camarillo, CA 93012, to consider and act upon the following matters:

- 1) Call to Order: Meeting was called to order at 8:03 am.
 - a. Members present: Dr. Virgil Adams, Richard Wagner, Missy Jarnagin, Damien Pena, Dana Lockwood, Elysse Farnell, Veronica Palafox, Joanne Coville, MacKenzie Garcia, Jonathan Neira. Members absent: Amanda VanNoy, Whitney VanBlargen. Members of the Public: Dr. Genevieve Evans Taylor, Christine Thompson
- 2) Approval of Minutes: Minutes were approved.
- 3) Public Forum: No members of the public addressed the Board.
- 4) Michael Berman, Chief Information Officer for CSU Channel Islands: Presentation Postponed.
- 5) ASI Board Interviews for open student Director position: No Candidates Present.
- 6) Financial Report:

Reviewed six months financial reports. The Budget Office is still adjusting the amounts owed to ASI by the campus. Summary sheet shows Student Fees are over because we have more students. Student Programming Board is over budget by \$2,000 and the Student Union is significantly under budget. Will look into expenses to make sure everything has been brought over from PeopleSoft to QuickBooks.
- 7) Reports
 - a. Student Programming Board: Spring Semester events finalized. Kings game will be March 3rd, will start selling tickets. SPB is starting a monthly newsletter. SPB will hold their General Board Meetings at Tuesdays at 6:00pm in the Student Union Conference Room.
 - b. Student Government: New meeting time is scheduled for Tuesday 7:30 pm in the Student Union Conference Room, ASI Entity retreat coming up next Saturday, January 29th.
 - c. CI View: No Report
 - d. Nautical: The 08-09 yearbooks have been completed. Working on finished 09-10. Will present to the VPSA executive board to make sure every area has a book. New meeting time Thursday at 5:00 in the Yearbook Office.
 - e. Community Relations: A luncheon will be hosted today which will focus on jobs and internships for CI students. Will discuss the process of hiring and getting applications from CI students. CI Luncheon with President Rush will occur February 24th. Working on the welcome bags for orientation. Dolphin Discount Program will roll out the first week of Spring Semester.
 - f. Report Questions: No questions
- 8) ASI/Student Union Updates
 - a. Summary of Student Union traffic for November & December (Christine Thompson): No report
 - b. AOA Conference (Dr. Evans Taylor): AB 1233 addresses the governing structures for auxiliary organizations. AB 1233 is in alignment with California Nonprofit Public Benefit Corporation Law which states the following:
 - i. Cannot have nonvoting members on Board or Committee

- ii. No proxy voting is permitted at any board or committee meeting
- iii. No veto power
- iv. SB 8 by Senator Yee – (previously SB 330) – public records for auxiliary organizations
- v. Disclosure of donor names
- vi. AOA creating own bill
- vii. EO 1052 – reimbursement of university for costs incurred from auxiliaries (IT, OPC, Budget and Finance). May be withdrawn and replaced in the near future.
- viii. Since coming back from AOA, I have thoroughly reviewed these documents and compared them to our current governing documents (By-Laws, Operating Agreement, and Articles of Incorporation). We owe an extreme amount of gratitude to Vice President Coville for her efforts and diligence in the creation and writing of these documents. They are very well written and cover nearly all of the issues addressed through these recent Executive Orders and state mandates. There are a few minor changes which will need to be made as a result of AB1233 and I will give these to you for review by our next meeting.

c. Custodial Service (Dr. Evans Taylor): Danny McDougald moved back to University. Raul Dominguez staying on Monday through Friday.

9) Outstanding Business

10) New Business

a. Policy and Procedure updates

- i. Student Union – weekend traffic and 10-11pm weekday, hours of operation (Christine Thompson): (See Appendix A) Review of the hours of operation for the Fall 2010 semester; on average there were 9.8 students in the building on any given Saturday and 14.2 students on any given Sunday. On weekends from 10:00pm-11:00pm there were 3.43. Labor costs associated from keeping the building open during these times averages around \$5,500. Directive from the Board to increase efforts to get more traffic into the Student Union. An increase in marketing, events, programming, as well as evaluating students who use the building on these times will allow the Board to make the best possible decisions regarding hours of operation.

b. DSA Student Success Indicators (Dr. Evans Taylor)

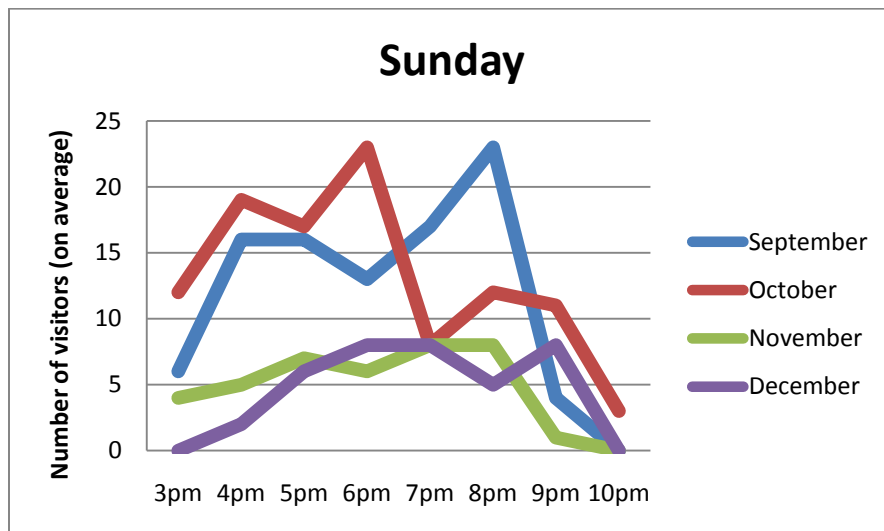
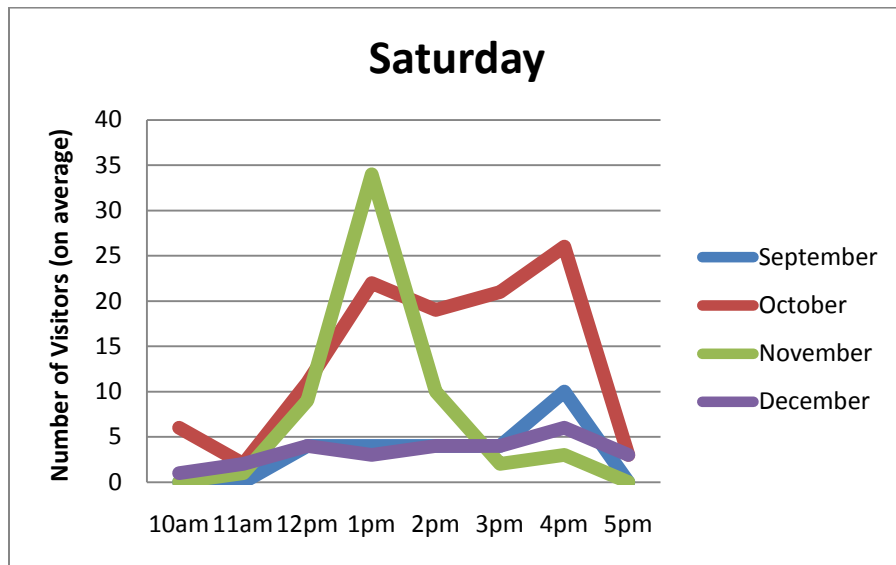
- i. Student Union Statement of Purpose – proposed changes : See Appendix B

11) Adjournment

Next ASI Board Meeting is scheduled for Thursday, February 3, 2011 at 8:00 AM in the Student Union Conference Room.

Agenda respectfully submitted by Dr. Genevieve Evans Taylor in Christine Thompson's absence.

Appendix A



Costs Analysis

Average number of hourly/daily visitors on Saturday: **1.4/9.8**

Average number of hourly/daily visitors on Sunday: **2.1/14.2**

Costs to stay open on Saturday & Sunday for fall 2010 semester: \$3,990

SATURDAY	10am	11am	12pm	1pm	2pm	3pm	4pm	5pm
----------	------	------	------	-----	-----	-----	-----	-----

September	0	0	1	1	1	1	2.5	0
October	0.6	0.4	2.2	4.4	3.8	4.2	5.2	0.6
November	0	0.25	2.25	3	2	0.5	0.75	0
December	0.33	0.667	1.33	1	1.33	1.33	2	1

SUNDAY	3pm	4pm	5pm	6pm	7pm	8pm	9pm	10pm
September	1.5	4	4	3.25	4.25	5.75	1	0
October	2.4	3.8	3.6	4.6	1.6	2.4	2.2	0.6
November	1	1.25	1.75	2	2.5	2	0.25	0
December	0	0.67	2	2.67	2.67	1.67	2.67	0

Total average weekend visitors: **24**

- 336 visitors a semester, 672 visitors a year

Weekdays from 10-11pm

10:00 PM - 11:00 PM Average # of Visitors	Monday	Tuesday	Wednesday	Thursday	Friday	
September	10.5	5.5	5.13	5	3.2	5.866
October	5.5	3.75	4.5	8.5	1.3	4.71
November	0.5	1.5	0.75	3.75	0.38	1.376
December	3.25	0.5	0.5	4.5	0	1.75
	4.9375	2.8125	2.72	5.4375	1.22	3.4255

ASI Student Union

Student Needs
Purpose Statements

STUDENT NEEDS – the team



current student voice



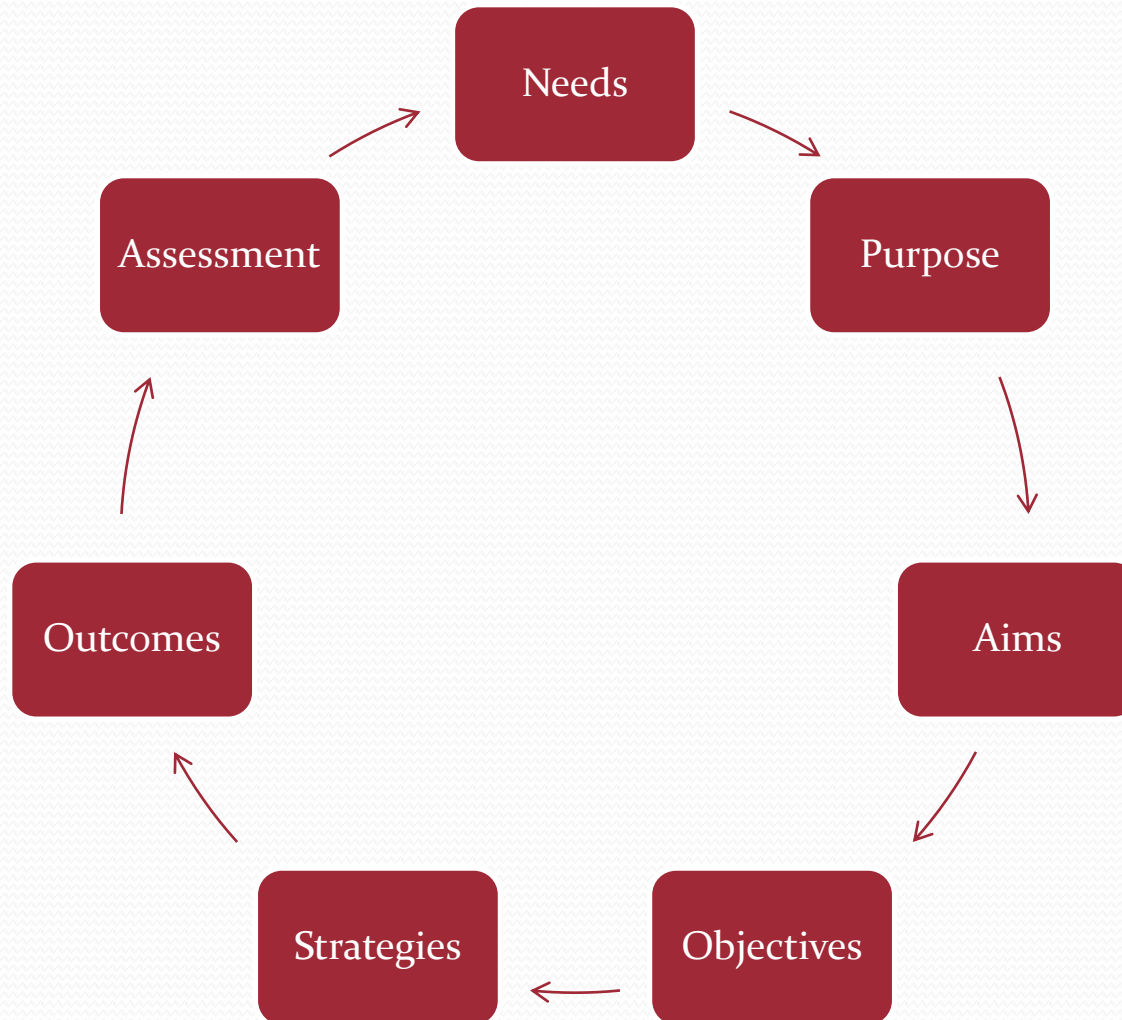
historical perspective



professional experience



Our Charge – Strategic Plan



STUDENT NEEDS – the process

- Elements Café
- Vetted with ASI Board
- Contemporary Perspectives
 - Readings
 - Road Trip
- Historical Perspectives
 - Readings





STUDENT NEEDS – the process

- Reviewed other campuses purpose statements
- Reviewed current strategies
- Reviewed current assessment tools

ASI Needs Statements

- Students must have a *sense of belonging* to the CI community.
- Students' opinions and *perspectives* must be *heard* and acknowledged by university faculty, staff, administrators and community members.
- Students require their *ASI fees* to be managed in an ethical, legal, and professional manner.
- Graduating students must be prepared to be *contributing citizens* of society.
- Students need to seek, appreciate and respect *diversity* of thought, action and being.
- Students need ASI to maintain *relevancy*.
- Students need to discover and articulate their *internal beliefs*.

Student Union Needs Statements

- Students have a need to *interact* with fellow students, university faculty, staff, administrators and community members.
- Students have a need for a *sense of belonging* which cultivates CI Pride and loyalty.
- In order to maintain a *healthy life*, students need a place to connect, relax, de-stress and rejuvenate.
- Students need to gain skills and knowledge necessary to be *contributing citizens* of the greater society.
- Students need to be provided with opportunities for a *holistic* education.
- Students need to discover and articulate their *internal beliefs*.
- Students need to be provided with opportunities for *experiential learning*.
- Students need a Union which provides and maintains *relevant* services, programs and facilities.
- Students require their student body center *fees* to be managed in an ethical, legal, and professional manner.

Purpose Statements

- Define the core functions
- Cover breadth and depth
- Based on multiple sources
- Students are clearly the center
- Well written
- Reflects underlying student needs



ASI Mission Statement

Placing students at the center of the educational experience, Associated Students of California State University Channel Islands, Inc. exists to support the University by providing programs, services, and publications that meet the needs of a diverse CSUCI student body through the creation of an innovative, experiential, and collaborative educational environment.

Purpose Statements — *ASI Mission*

- Define the core functions
- Cover breath and depth
- Based on multiple sources
- Students are clearly the center
- Well written
- Reflects underlying student needs

Other possible changes



Student Union Statement of Purpose

The Student Union serves to *foster community and enhance student learning and development* on the CI campus by providing *exceptional services*, supporting *holistic programming*, creating regular opportunities for *staff development*, and maintaining an *environmentally responsible facility*.

Purpose Statements — *Student Union*

- Define the core functions
- Cover breath and depth
- Based on multiple sources
- Students are clearly the center
- Well written
- Reflects underlying student needs

Other possible changes