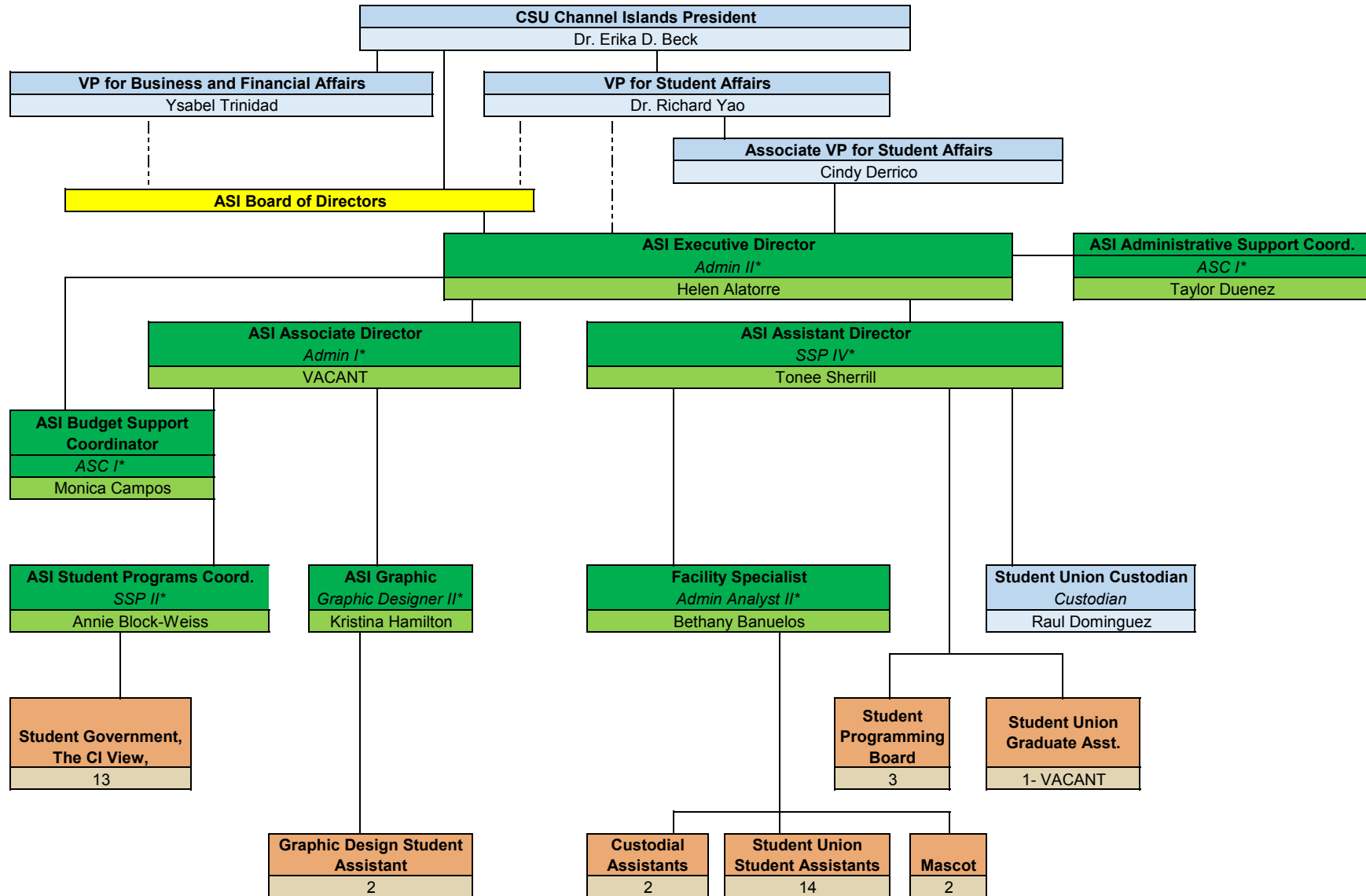


## Associated Students of California State University Channel Islands Inc.



**To clarify the relationships depicted within in the CI ASI Organizational Chart, please note the following:**

1. According to the California Education Code, the University President (Dr. Erika D. Beck) has "responsibility over the entire campus program" which includes the CI ASI.
2. According to Executive Order 1000, the CFO (VP Trinidad) is the "primary campus financial officer in respect to administration of .... delegations of authority and responsibility" related to auxiliaries.
3. The ASI Executive Director (Helen Alatorre) reports to the ASI Board of Directors, is accountable to and receives direction from the Vice President for Student Affairs (Dr. Yao), and receives day-to-day supervision and oversight from the AVPSA (Cindy Derrico)

**Other Notes:**

Note that all positions shown in green are career employees of University Auxiliary Services (UAS), positions in tan are student employees of UAS, and positions in blue are CSU/State employees.  
 \* CSU state classification information is provided for the purpose of comparative reference only.